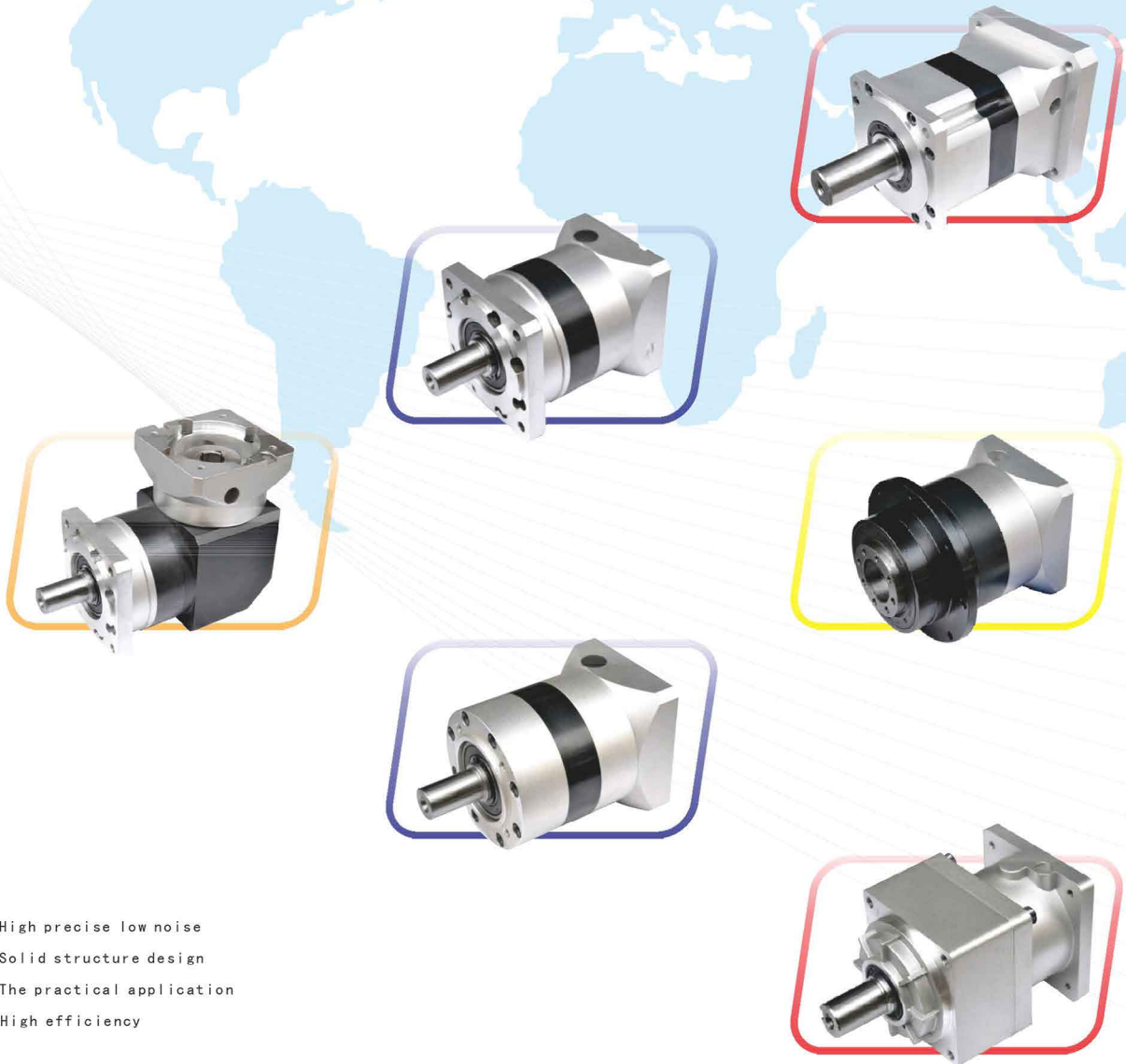


Precision Planetary Gearbox

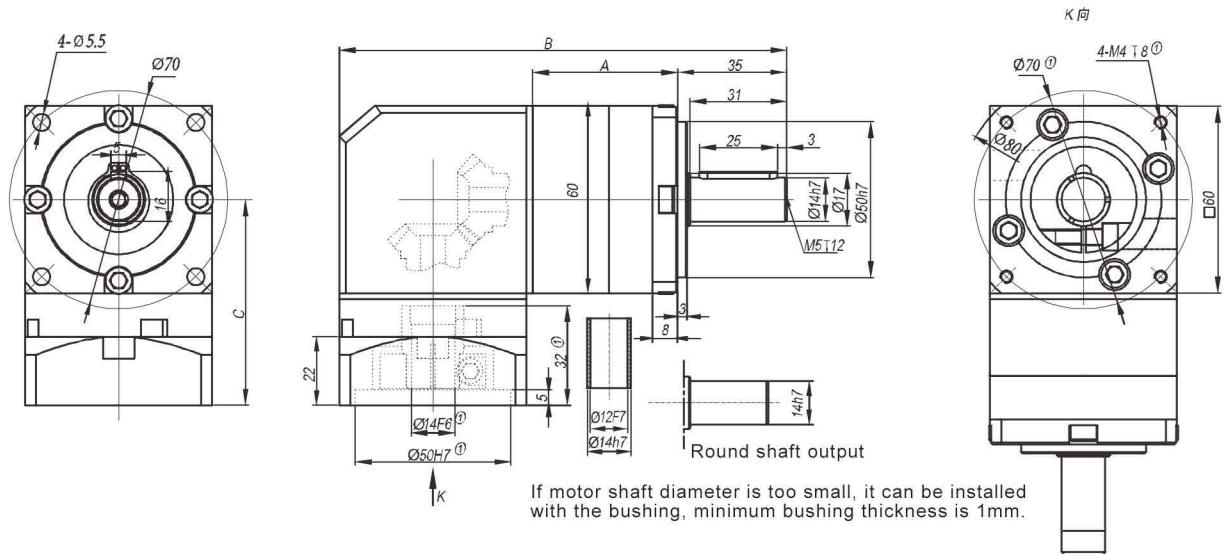


High precise low noise
Solid structure design
The practical application
High efficiency

伍勒斯精密机械有限公司
WOOLARS PRECISION MACHINERY CO., LIMITED

2018版
Product catalogue
welcome to consult for more information

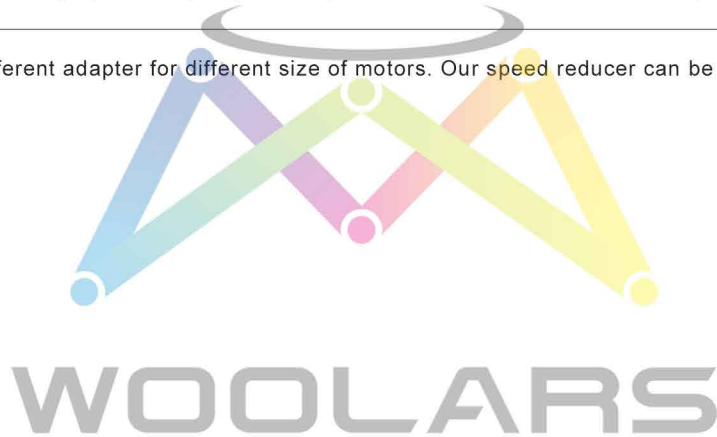
ZPLF60



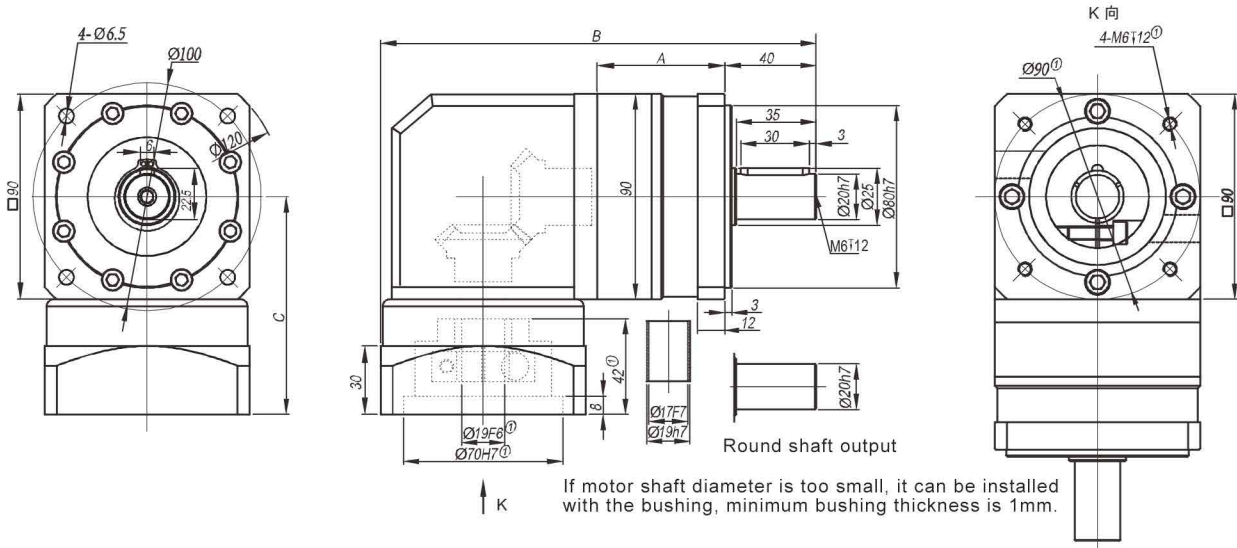
View mode

| Stage | Stage 1 (i: 3 4 5 7 10) | | | Stage 2 (i: 12 16 20 25 28 35 40 50 70) | | | Stage 3 (i: 64 80 100 125 140 175 200 250 350 400 500 700 1000) | | |
|---|--|-------|------|--|-------|------|--|-------|------|
| | A | B | C | A | B | C | A | B | C |
| Length(mm) | 46.5 | 143.5 | 66.0 | 63.0 | 160.0 | 66.0 | 79.5 | 176.5 | 66.0 |
| No load torque(Nm) | about 0.6 | | | about 0.3 | | | about 0.3 | | |
| Efficiency withfull load(%) | 95 | | | 93 | | | 90 | | |
| Back lash(arcmin) | <12 | | | <15 | | | <18 | | |
| Noise(dB) | ≤58 | | | ≤58 | | | ≤58 | | |
| Weight(Kg) | 2.2 | | | 2.5 | | | 2.8 | | |
| Direction of rotation | Input and output in different directions | | | | | | | | |
| Not listed parameters refer to the PLE060 (including the maximum radial force rated input speed, the maximum input speed \ maximum axial force, the average life expectancy, torsional rigidity, lubricating oil, protection grade, installation, reduction ratio, rated output torque, maximum output torque, moment of inertia) | | | | | | | | | |

Subscript ①: We offer different adapter for different size of motors. Our speed reducer can be matched to any motor.

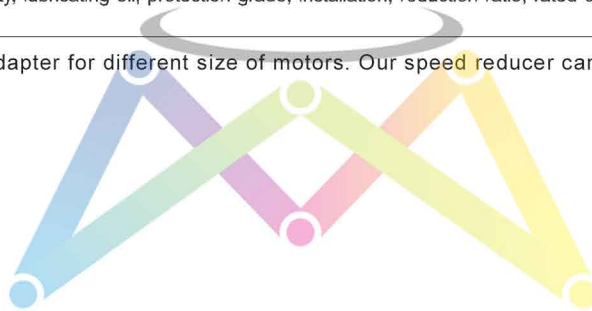


ZPLF90



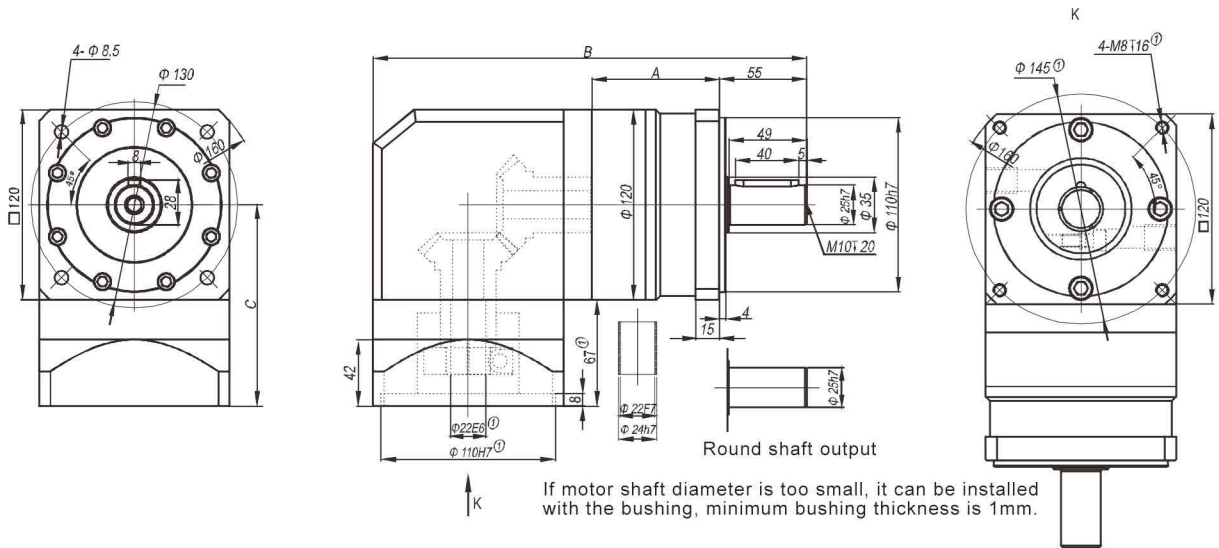
| Stage | Stage 1 (i: 3 4 5 7 10) | | | Stage 2 (i: 12 16 20 25 28 35 40 50 70) | | | Stage 3 (i: 64 80 100 125 140 175 200 250 350 400 500 700 1000) | | |
|---|--|-------|------|--|-------|------|--|-------|------|
| | A | B | C | A | B | C | A | B | C |
| Length(mm) | 55 | 191.0 | 95.5 | 80 | 215.0 | 95.5 | 104 | 239.0 | 95.5 |
| No load torque(Nm) | about 0.8 | | | about 0.4 | | | about 0.4 | | |
| Efficiency withfull load(%) | 95 | | | 93 | | | 90 | | |
| Back lash(arcmin) | <12 | | | <15 | | | <18 | | |
| Noise(dB) | ≤62 | | | ≤62 | | | ≤62 | | |
| Weight(Kg) | 4.7 | | | 5.3 | | | 5.9 | | |
| Direction of rotation | Input and output in different directions | | | | | | | | |
| Not listed parameters refer to the PLE060 (including the maximum radial force rated input speed, the maximum input speed \ maximum axial force, the average life expectancy, torsional rigidity, lubricating oil, protection grade, installation, reduction ratio, rated output torque, maximum output torque, moment of inertia) | | | | | | | | | |

Subscript ①: We offer different adapter for different size of motors. Our speed reducer can be matched to any motor.



WOOLARS

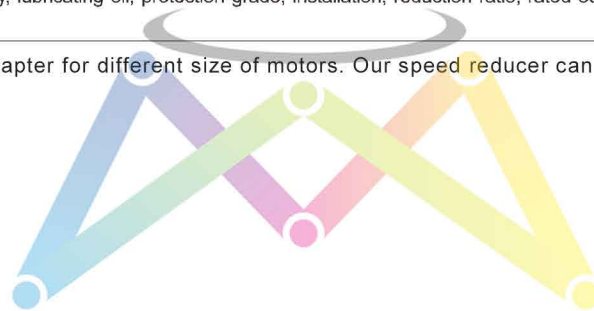
ZPLF120



View mode

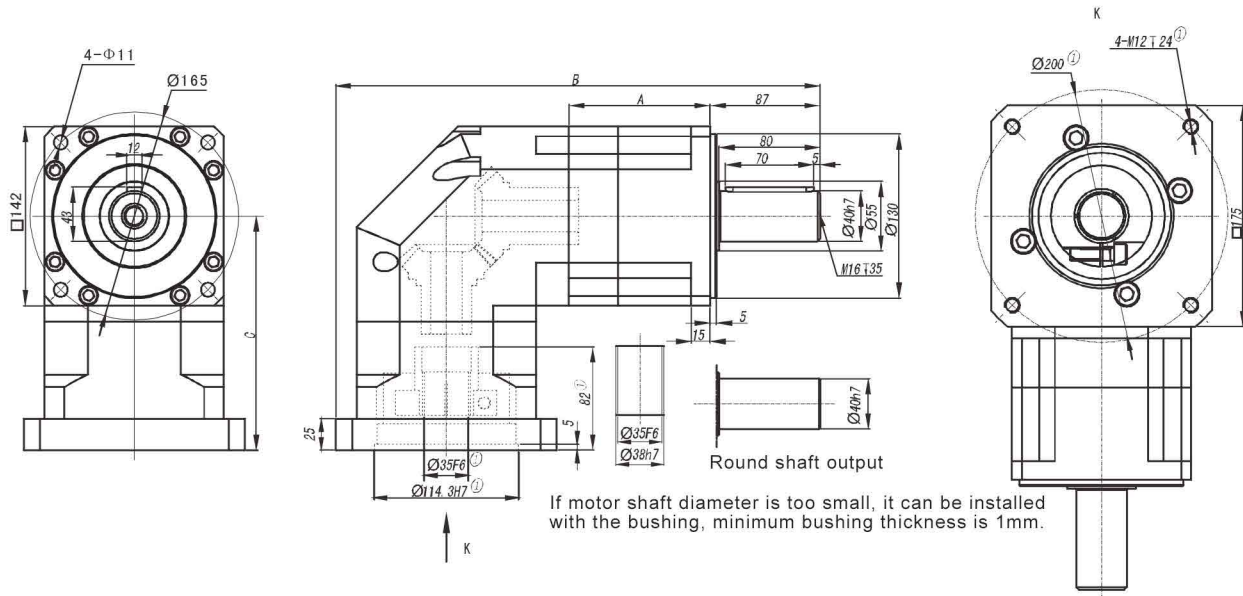
| Stage | Stage 1 (i: 3 4 5 7 10) | | | Stage 2 (i: 12 16 20 25 28 35 40 50 70) | | | Stage 3 (i: 64 80 100 125 140 175 200 250 350 400 500 700 1000) | | |
|---|--|-------|-------|--|-------|-------|--|-------|-------|
| | A | B | C | A | B | C | A | B | C |
| Length(mm) | 80.5 | 273.5 | 127.0 | 112.0 | 305.0 | 127.0 | 143.5 | 336.5 | 127.0 |
| No load torque(Nm) | about 1.3 | | | about 0.6 | | | about 0.6 | | |
| Efficiency with full load(%) | 95 | | | 93 | | | 90 | | |
| Back lash(arcmin) | <12 | | | <15 | | | <18 | | |
| Noise(dB) | ≤65 | | | ≤65 | | | ≤65 | | |
| Weight(Kg) | 11.7 | | | 13.7 | | | 16.0 | | |
| Direction of rotation | Input and output in different directions | | | | | | | | |
| Not listed parameters refer to the PLE060 (including the maximum radial force rated input speed, the maximum input speed \ maximum axial force, the average life expectancy, torsional rigidity, lubricating oil, protection grade, installation, reduction ratio, rated output torque, maximum output torque, moment of inertia) | | | | | | | | | |

Subscript ①: We offer different adapter for different size of motors. Our speed reducer can be matched to any motor.



WOOLARS

ZPLX142



View mode

| Stage | Stage 1 (i: 3 4 5 8) | | | Stage 2 (i: 12 16 20 25 32 40 64) | | | Stage 3 (i: 60 64 80 100 120 160 200 256 320 512) | | |
|---|--|-------|-------|--------------------------------------|-------|-------|--|-------|-------|
| | A | B | C | A | B | C | A | B | C |
| Length(mm) | 112.0 | 383.5 | 185.5 | 151.0 | 422.5 | 185.5 | 190.0 | 461.5 | 185.5 |
| No load torque(Nm) | about 3.2 | | | about 2.1 | | | about 2.1 | | |
| Efficiency withfull load(%) | 95 | | | 93 | | | 90 | | |
| Back lash(arcmin) | <12 | | | <15 | | | <18 | | |
| Noise(dB) | ≤68 | | | ≤68 | | | ≤68 | | |
| Weight(Kg) | 26.5 | | | 31.5 | | | 37.5 | | |
| Direction of rotation | Input and output in different directions | | | | | | | | |
| Not listed parameters refer to the PLE060 (including the maximum radial force rated input speed, the maximum input speed \ maximum axial force, the average life expectancy, torsional rigidity, lubricating oil, protection grade, installation, reduction ratio, rated output torque, maximum output torque, moment of inertia) | | | | | | | | | |

Subscript ①: We offer different adapter for different size of motors. Our speed reducer can be matched to any motor.

