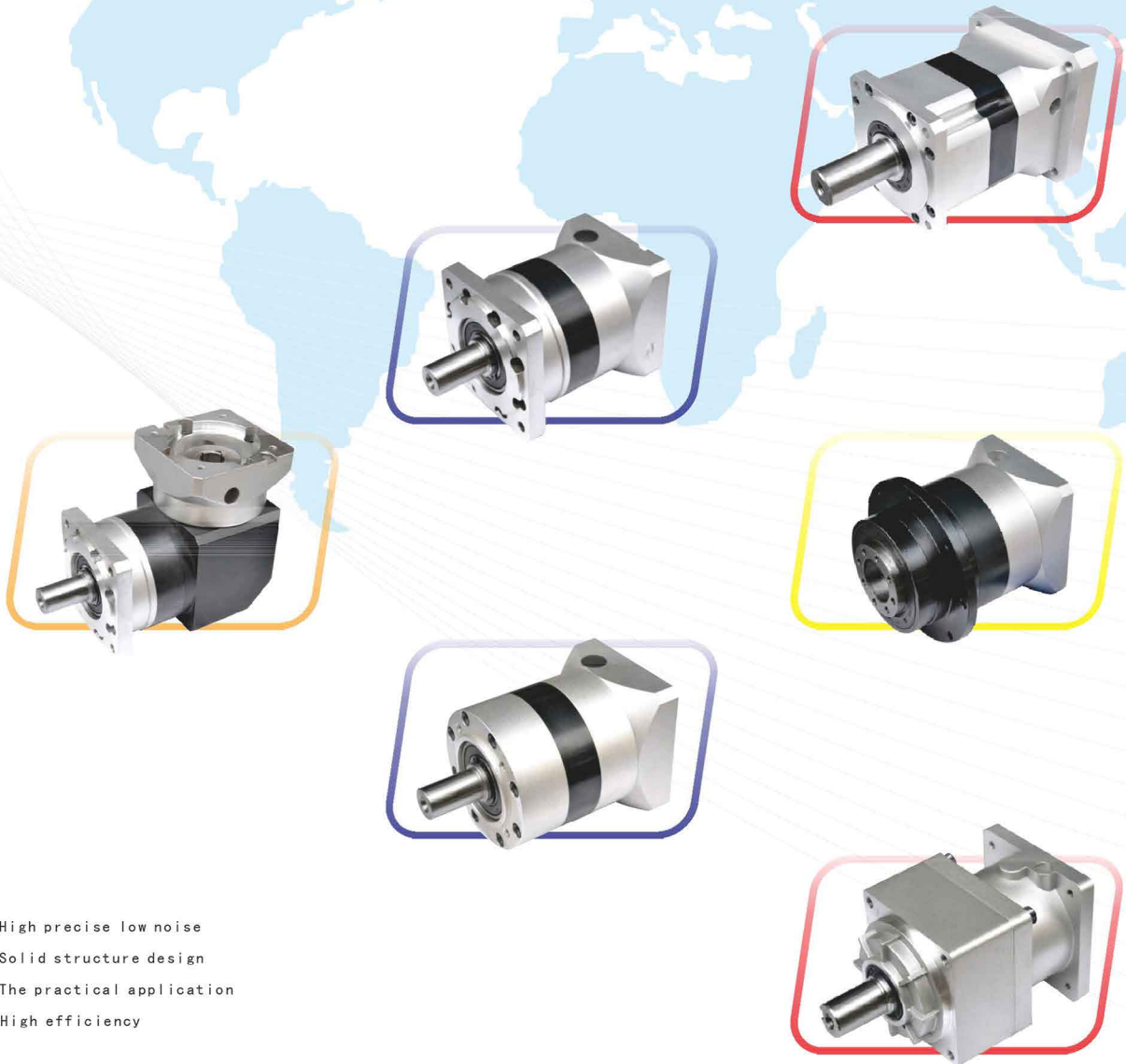


# Precision Planetary Gearbox



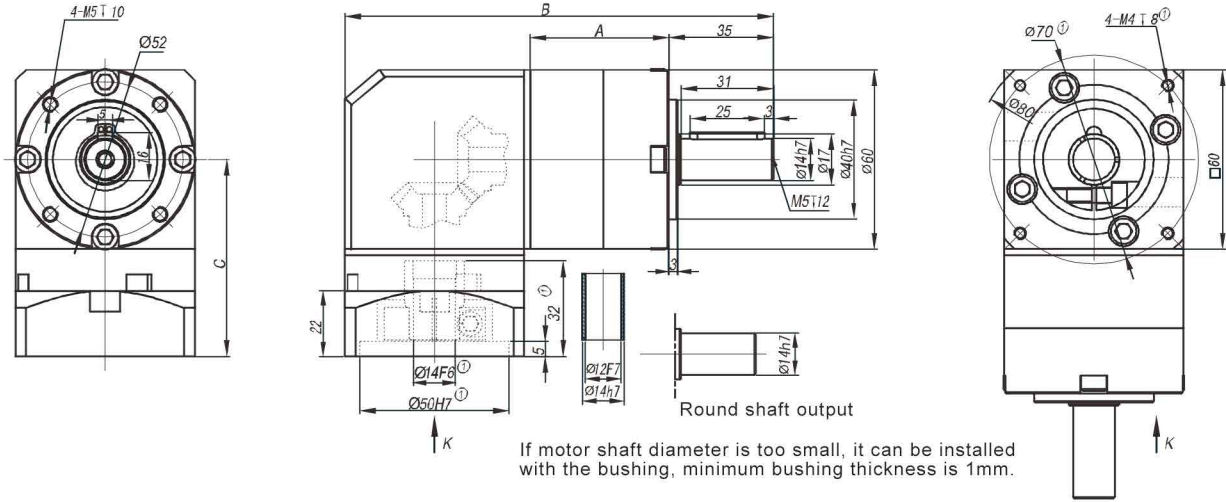
High precise low noise  
Solid structure design  
The practical application  
High efficiency

伍勒斯精密机械有限公司  
**WOOLARS PRECISION MACHINERY CO., LIMITED**

2018版  
Product catalogue  
welcome to consult for more information

[www.woolars.com](http://www.woolars.com)

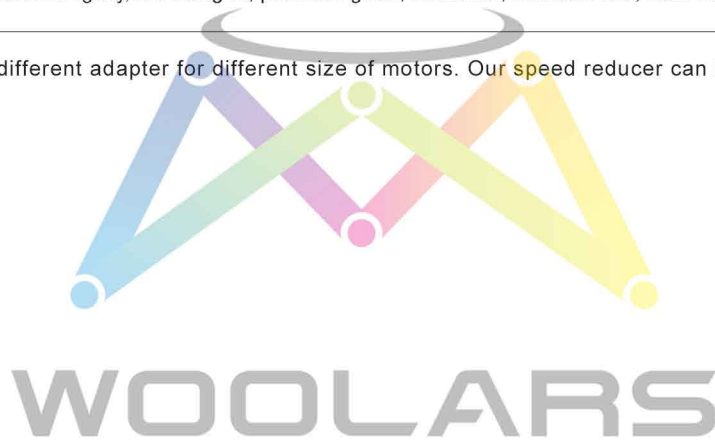
# ZPLE60



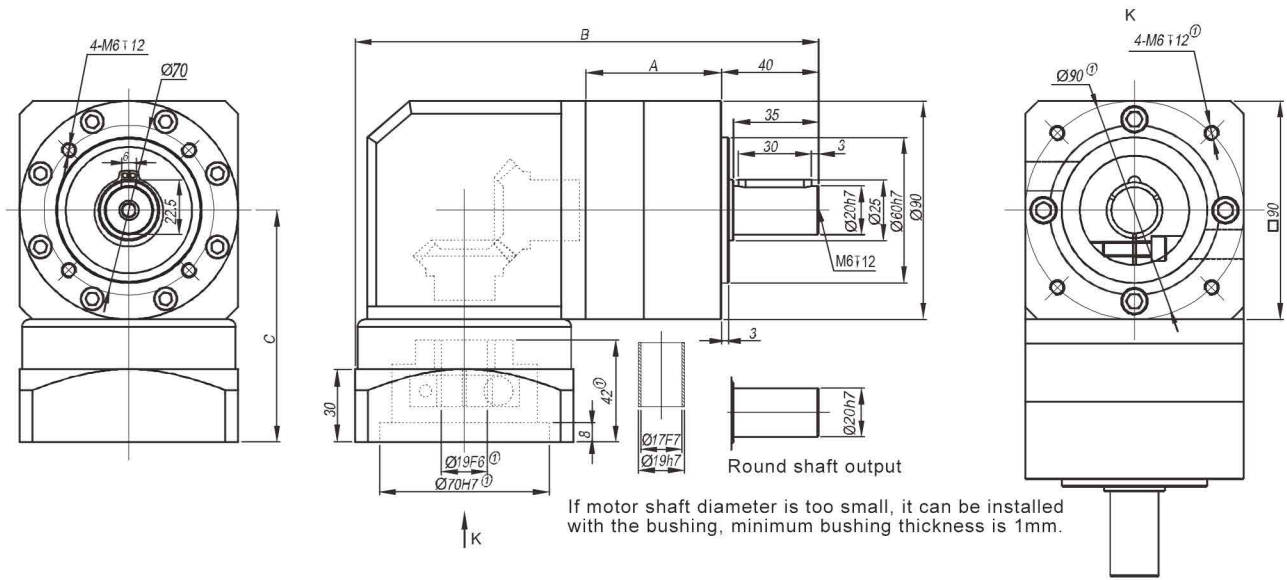
View mode

Stage	Stage 1 (i: 3 4 5 7 10)			Stage 2 (i: 12 16 20 25 28 35 40 50 70)			Stage 3 (i: 64 80 100 125 140 175 200 250 350 400 500 700 1000)		
	A	B	C	A	B	C	A	B	C
Length(mm)	46	143.5	66.0	62	160.0	66.0	78	176.5	66.0
No load torque(Nm)	about 0.6			about 0.3			about 0.3		
Efficiency withfull load(%)	95			93			90		
Back lash(arcmin)	<12			<15			<18		
Noise(dB)	≤58			≤58			≤58		
Weight(Kg)	2.2			2.5			2.8		
Direction of rotation	Input and output in different directions								
Not listed parameters refer to the PLE060 (including the maximum radial force rated input speed, the maximum input speed \ maximum axial force, the average life expectancy, torsional rigidity, lubricating oil, protection grade, installation, reduction ratio, rated output torque, maximum output torque, moment of inertia)									

Subscript ①: We offer different adapter for different size of motors. Our speed reducer can be matched to any motor.



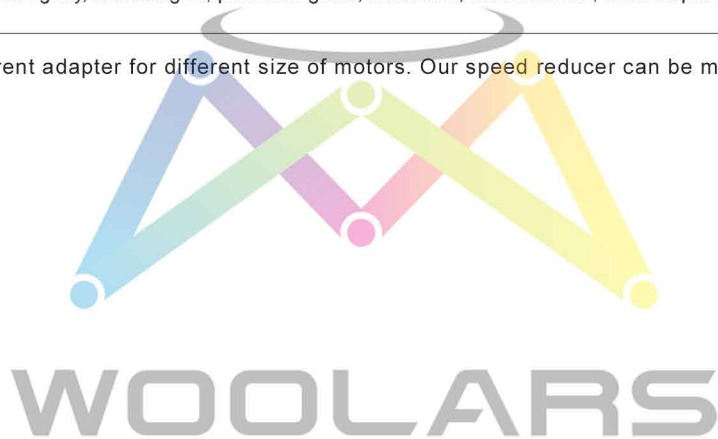
# ZPLE90



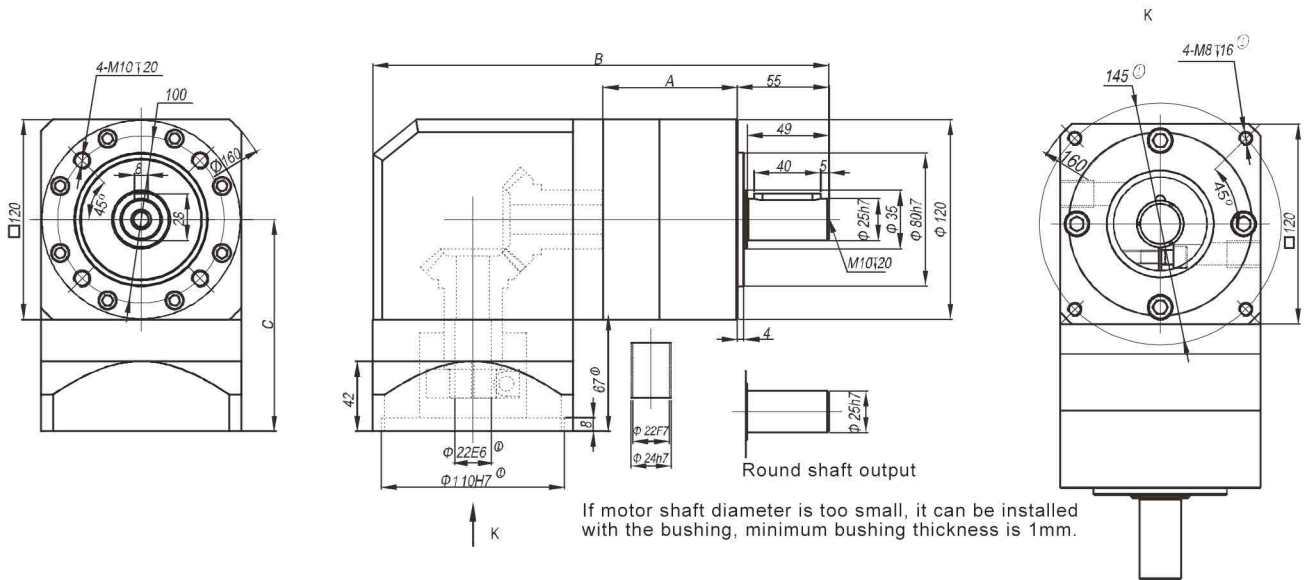
View mode

Stage	Stage 1 (i: 3 4 5 7 10)			Stage 2 (i: 12 16 20 25 28 35 40 50 70)			Stage 3 (i: 64 80 100 125 140 175 200 250 350 400 500 700 1000)		
	A	B	C	A	B	C	A	B	C
Length(mm)	55	191.0	95.5	78.5	215.0	95.5	101.5	239.0	95.5
No load torque(Nm)	about 0.8			about 0.4			about 0.4		
Efficiency with full load(%)	95			93			90		
Back lash(arcmin)	<12			<15			<18		
Noise(dB)	≤62			≤62			≤62		
Weight(Kg)	4.7			5.3			5.9		
Direction of rotation	Input and output in different directions								
Not listed parameters refer to the PLE060 (including the maximum radial force rated input speed, the maximum input speed \ maximum axial force, the average life expectancy, torsional rigidity, lubricating oil, protection grade, installation, reduction ratio, rated output torque, maximum output torque, moment of inertia)									

Subscript ①: We offer different adapter for different size of motors. Our speed reducer can be matched to any motor.



# ZPLE120



View mode

Stage	Stage 1 (i: 3 4 5 7 10)			Stage 2 (i: 12 16 20 25 28 35 40 50 70)			Stage 3 (i: 64 80 100 125 140 175 200 250 350 400 500 700 1000)		
	A	B	C	A	B	C	A	B	C
Length(mm)	80	273.5	127.0	112.0	305.0	127.0	143.5	336.5	127.0
No load torque(Nm)	about 1.3			about 0.6			about 0.6		
Efficiency withfull load(%)	95			93			90		
Back lash(arcmin)	<12			<15			<18		
Noise(dB)	≤65			≤65			≤65		
Weight(Kg)	11.5			13.5			15.7		
Direction of rotation	Input and output in different directions								
Not listed parameters refer to the PLE060 (including the maximum radial force rated input speed, the maximum input speed \ maximum axial force, the average life expectancy, torsional rigidity, lubricating oil, protection grade, installation, reduction ratio, rated output torque, maximum output torque, moment of inertia)									

Subscript ①: We offer different adapter for different size of motors. Our speed reducer can be matched to any motor.

